



Sidestream®

High Performance Disposable Sidestream Nebuliser

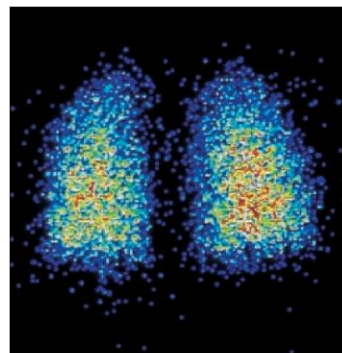
- Short Nebulisation Time – 2.5ml within 7 mins
- High Drug Deposition – 80% below 5 microns
- Repeatable Performance – Consistency Guaranteed

Profile's Sidestream is a highly efficient drug delivery nebuliser with minimal wastage.

Profile's Sidestream can be used to nebulise all commonly prescribed bronchodilators for respiratory conditions. Aerosol drug effectiveness depends on the quality of its delivery to the lungs. Sidestream achieves 80% of output volume below the critical 5 microns, maximising each dose.

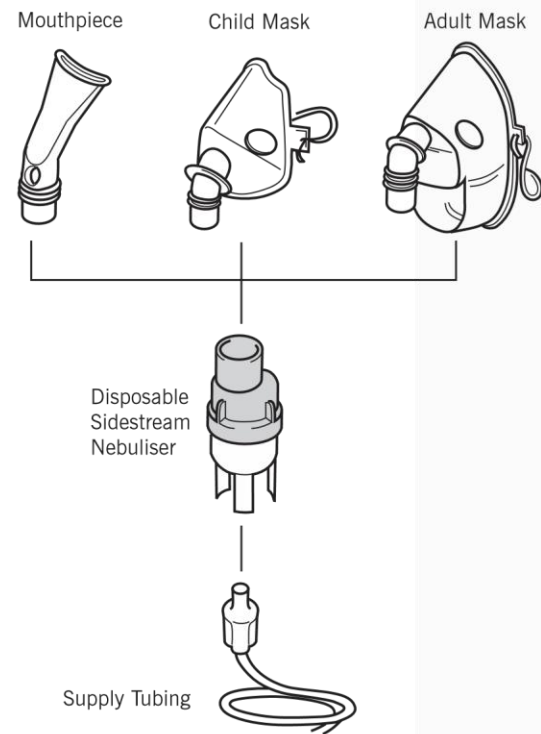
Sidestream produces a flow rate of 16 l/min by utilising a venturi, which draws in room air. This boosts output, reduces treatment time and improves patient compliance.

Unlike many other nebulisers, Sidestream will provide consistent drug delivery time after time. Which make Profile's Sidestream nebuliser, the choice for aerosol drug delivery.



80% of the aerosol reaches the lungs

Sidestream Configurations

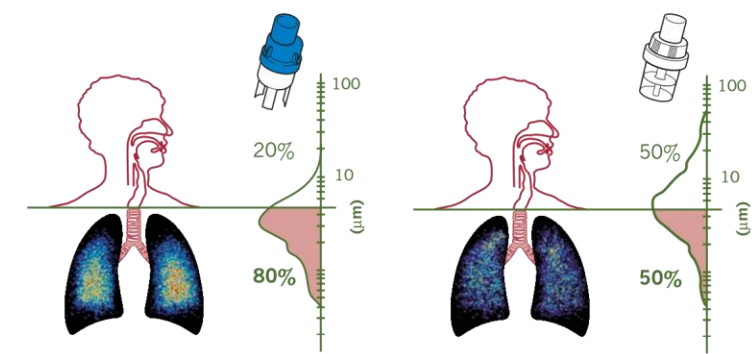


Flow Rate (L/min)	Total Flow (Venturi open L/min)	% O ₂ Concentration*	Output (g/min)	% Particles < 5µ	Respirable Output (g/min)	Time For Delivery of 2.5ml (min)	Mass Median Diameter (µm)
6	16	50	0.37	80	0.3	6.7	3.0
8	22	50	0.46	85	0.39	5.4	2.75
6	6	100	0.25	50	0.125	10	5

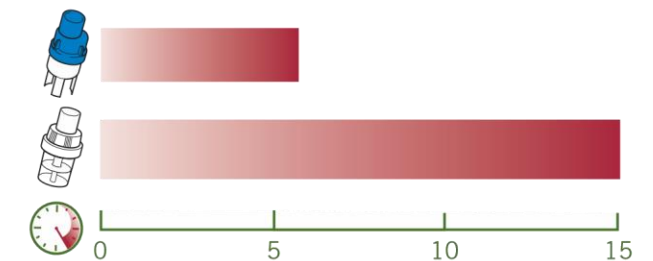
*When operated from an O₂ driving source

Sidestream
 Traditional Nebulizer

The respirable output of the Sidestream is increased by more than 140% compared to the traditional nebulizer.



This illustration, shows the percentage of respirable output to the Sidestream compared to that of a traditional nebulizer. Ref: Collis G.G. et al. Lancet 1990: 336:341



Sidestream[®]

