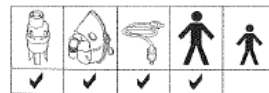


SideStream disposable kit



www.philips.com/respironics



CE 0123

LATEX

Respironics New Jersey, Inc.
5 Wood Hollow Road
Parsippany, New Jersey 07054 USA

Respironics Deutschland GmbH
Gewerbestrasse 17
82211 Herrsching Germany

REF 4446, 4446A

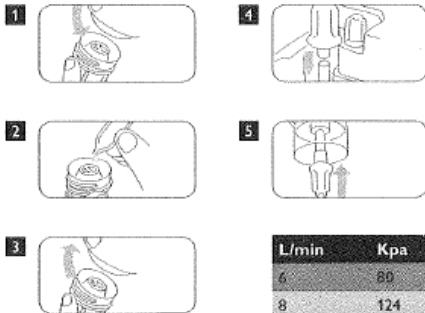
Made in China

PHILIPS
RESPIRONICS

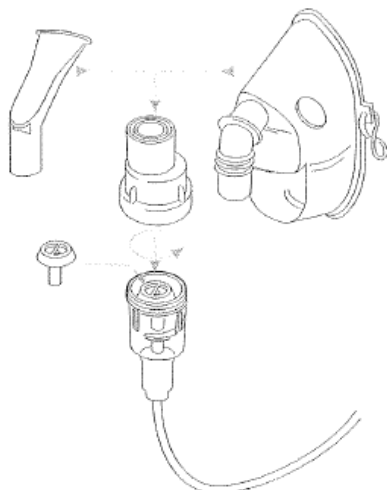


©2011 Koninklijke Philips Electronics N.V.
All rights reserved.

1070621 Rev 01 / bdc14183 * JUL 2011



L/min	Kpa	g/min
6	80	0.37
8	124	0.46



ENGLISH

Replace nebulizer after 30 days use.

⚠ Caution

- For single patient use.
- Do not dry your SideStream with a towel. Never use a cleaning brush or put sharp objects into the jet holes or baffle when cleaning it because this will damage the nebulizer.
- Do not remove the top of your SideStream when connected to an air supply.
- Do not lay your SideStream on its side when full of drug.
- Use of 22mm adapters may reduce output rate.
- Recommended fill volume 2 – 10 ml.

Cleaning - After each use:

- Take apart your SideStream top, medicine cup, baffle and mouthpiece and wash in warm, soapy water.
- Rinse all parts in clean, cold water.
- Shake out excess water and allow to air dry.
- Reassemble making sure the baffle is in the correct position.

⚠ Warning: Do not immerse tubing in water.

Mask - Wipe mask with a clean dry cloth and allow to air dry.